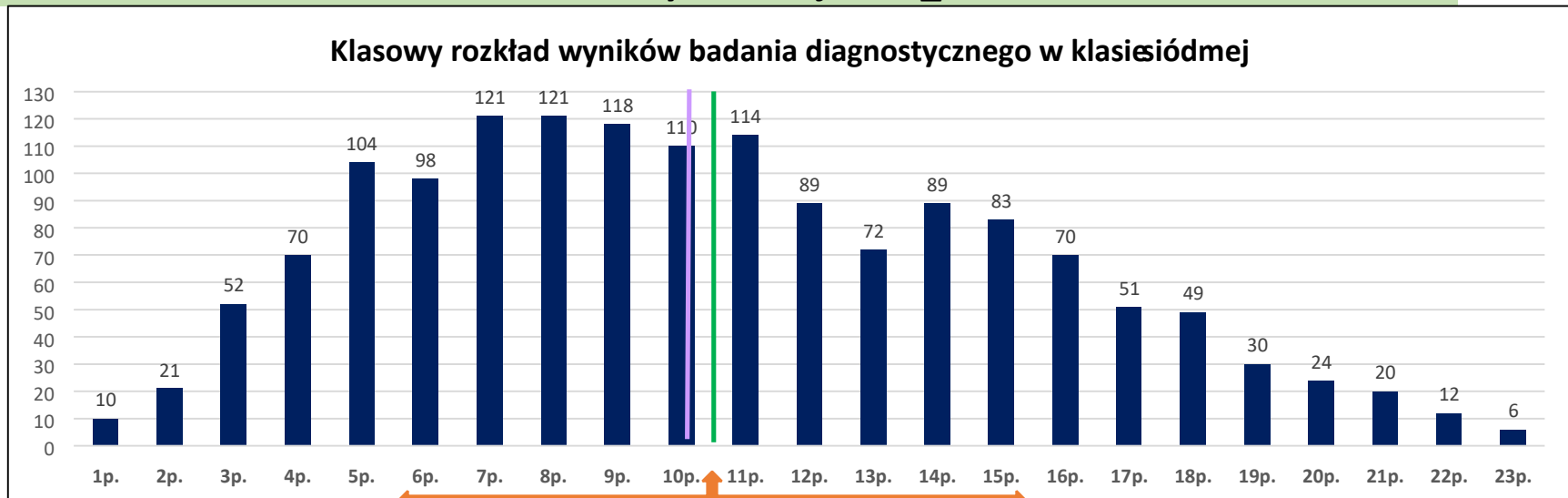


WYKRESY rozkładów wyników dla testu diagnozującego umiejętności matematyczne uczniów klasy siódmej MPD_24

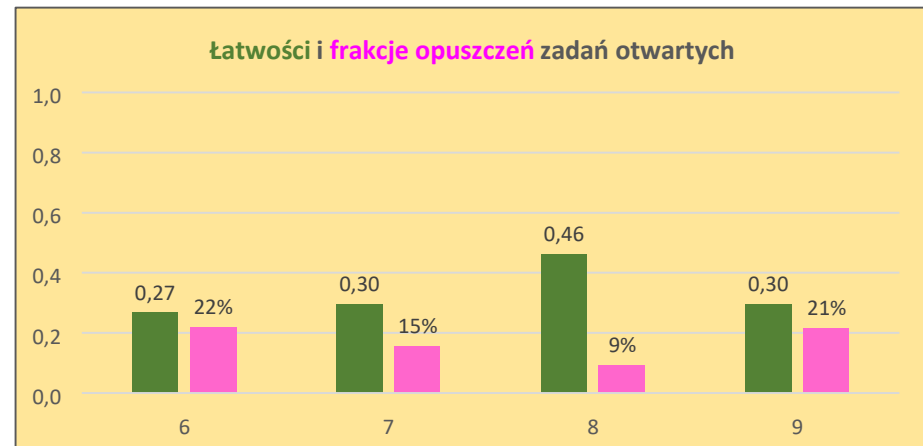
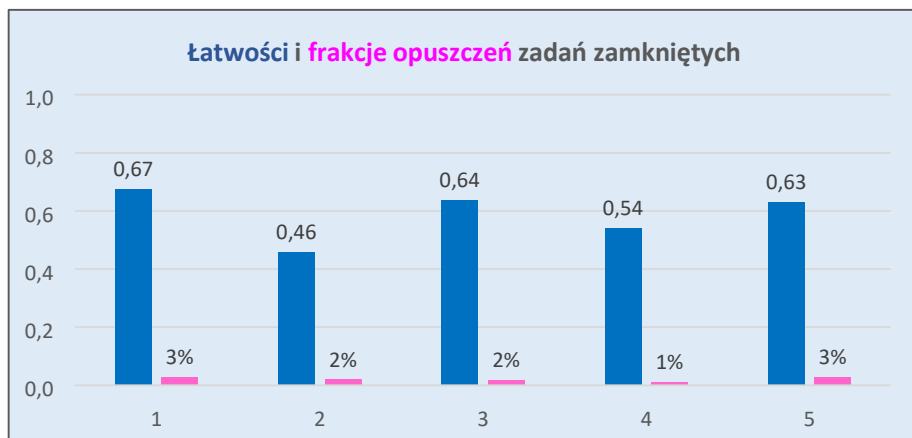


Liczba uczniów - 1534

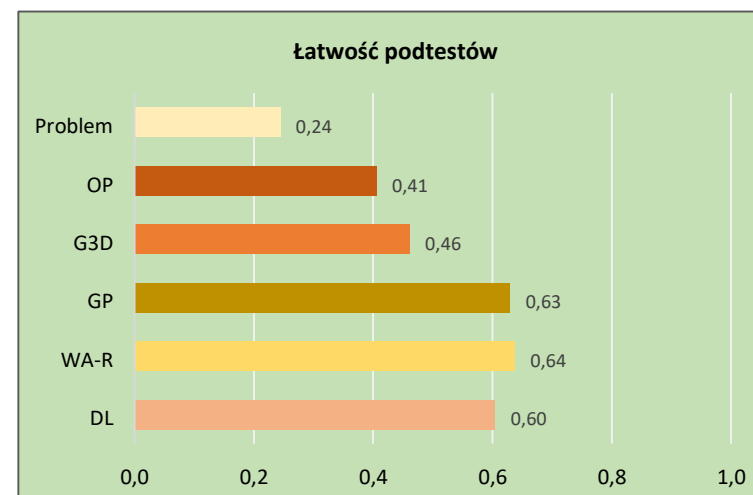
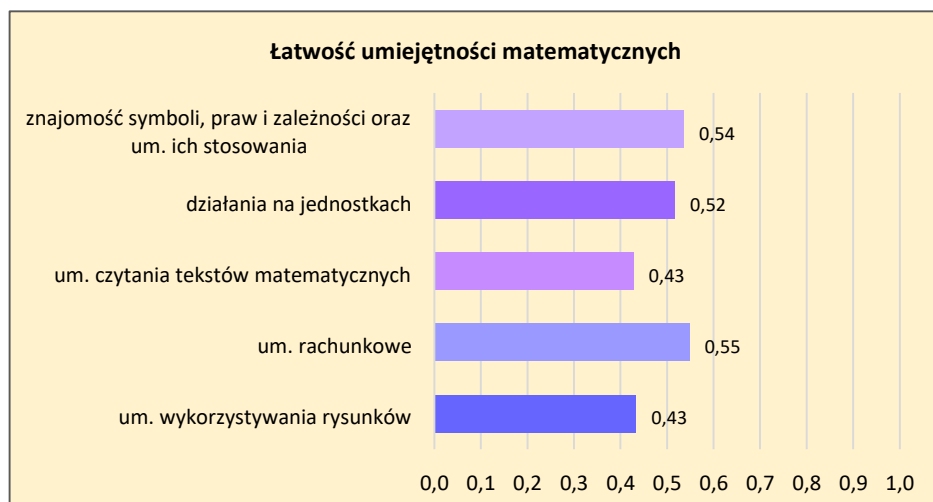
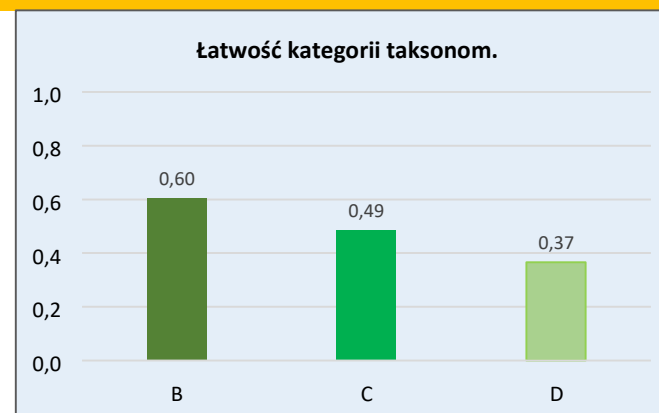
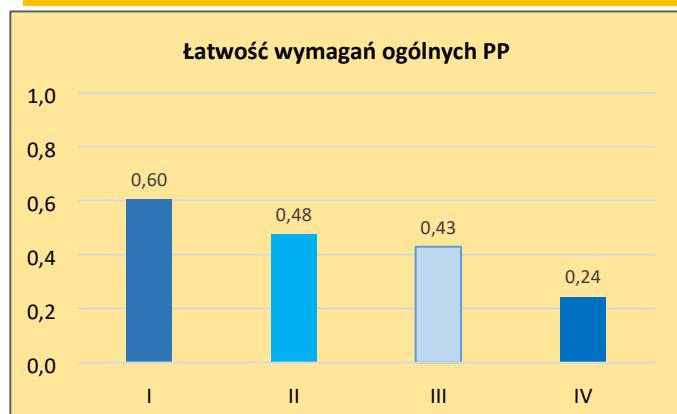
Średnia arytmetyczna - 10,5p.

Mediana - 10p.

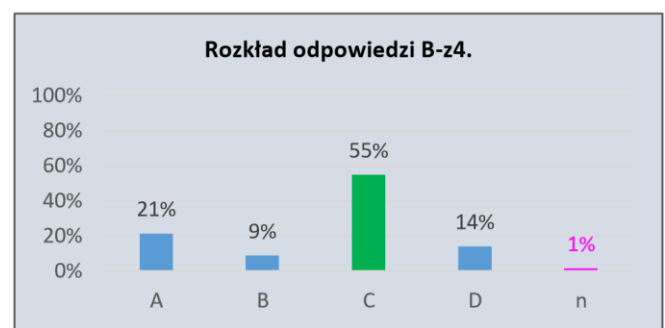
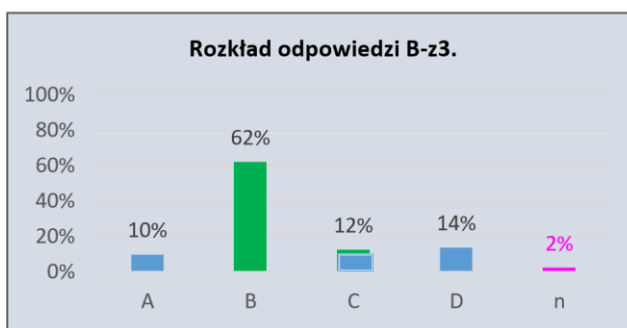
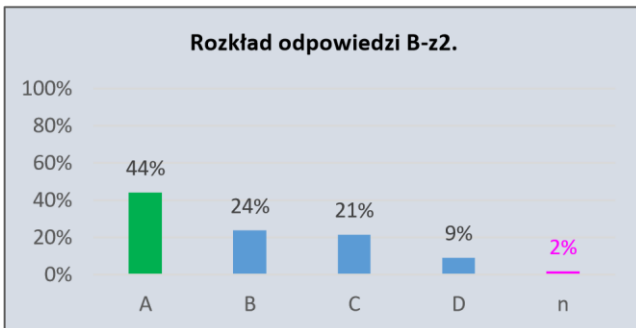
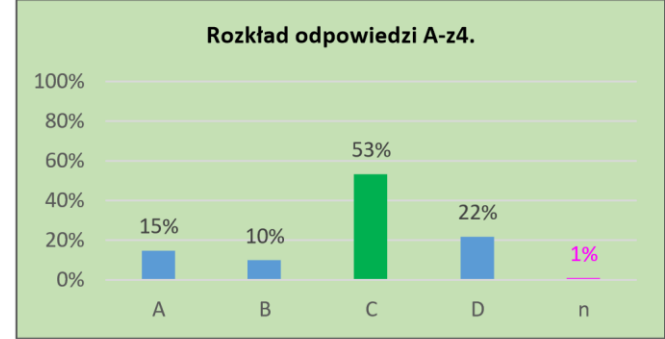
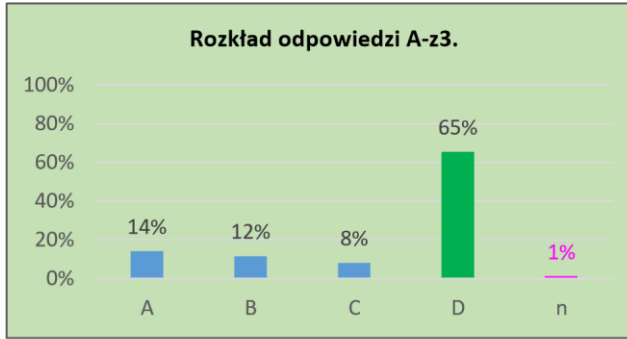
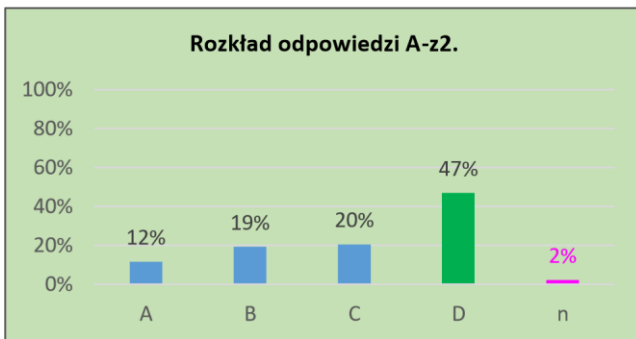
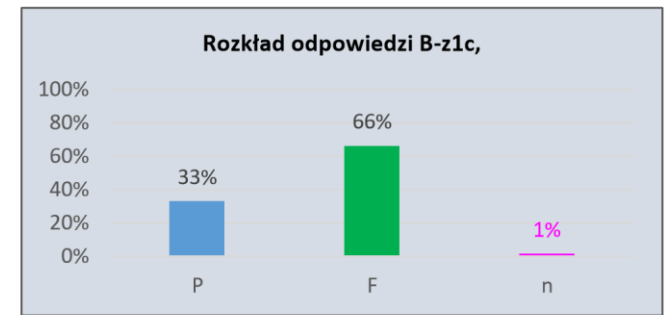
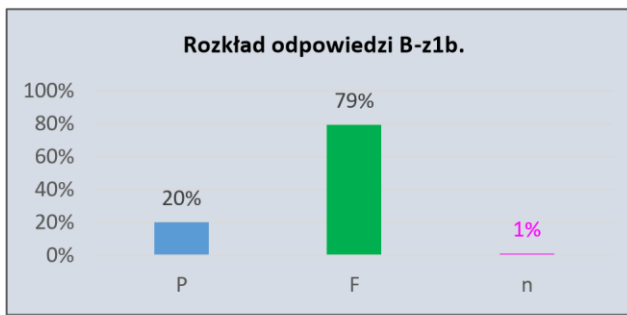
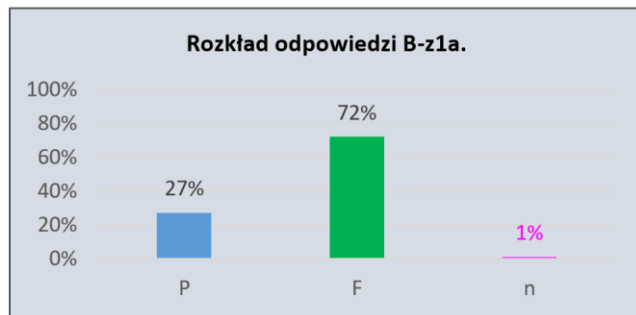
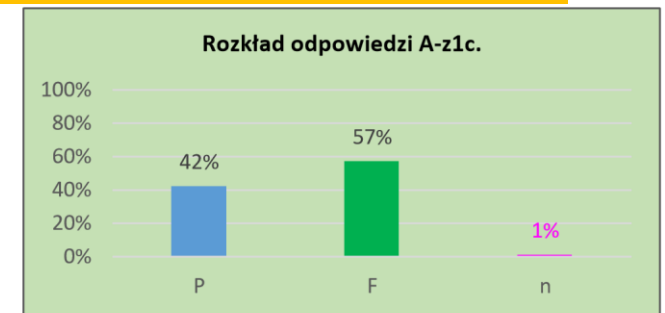
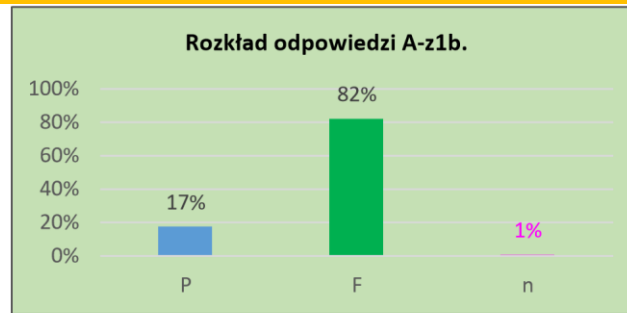
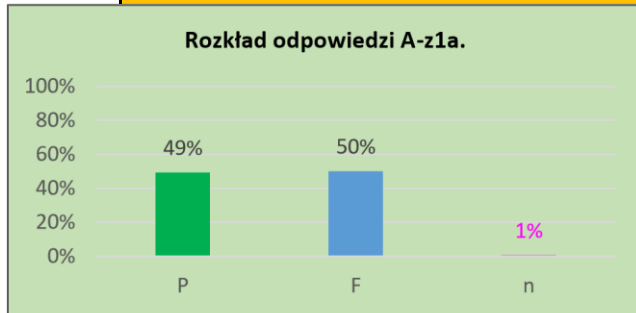
68% ucz. osiągnęło wyniki z przedziału (5,3p.; 15,3p)

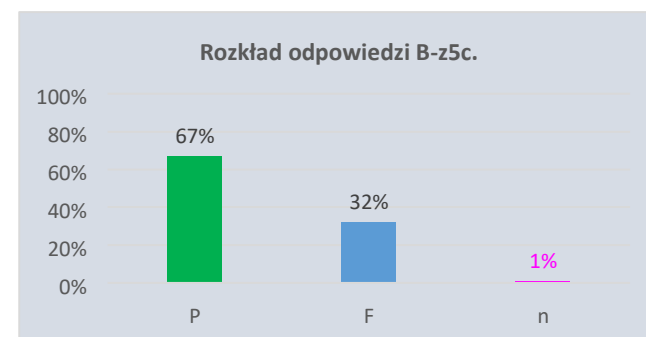
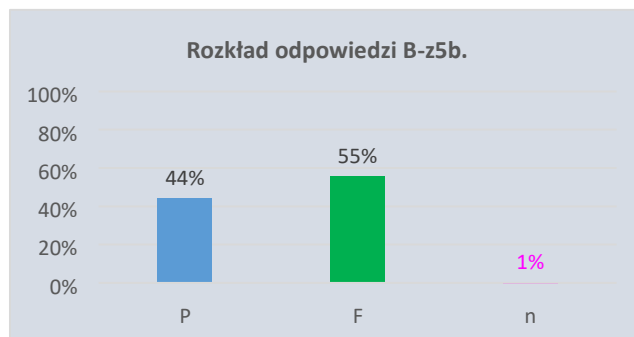
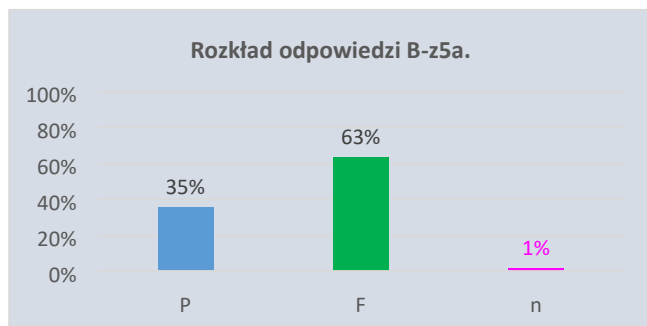
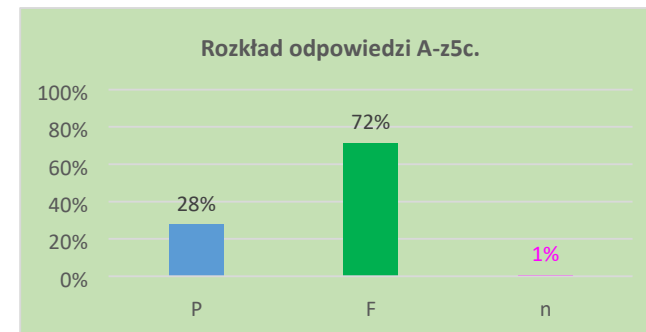
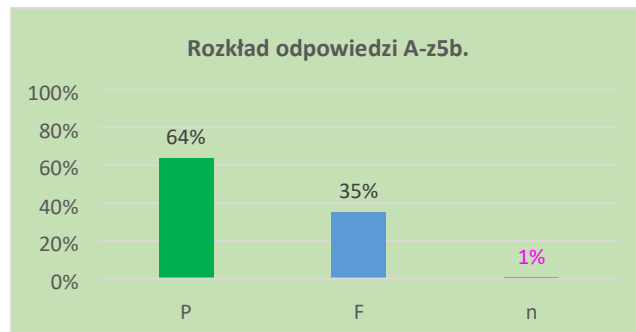
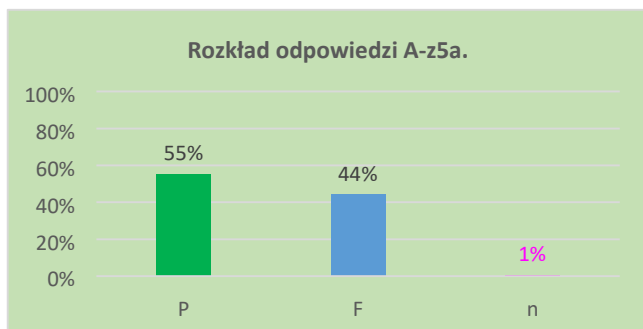


ŁATWOŚCI UMIEJĘTNOŚCI MATEMATYCZNYCH

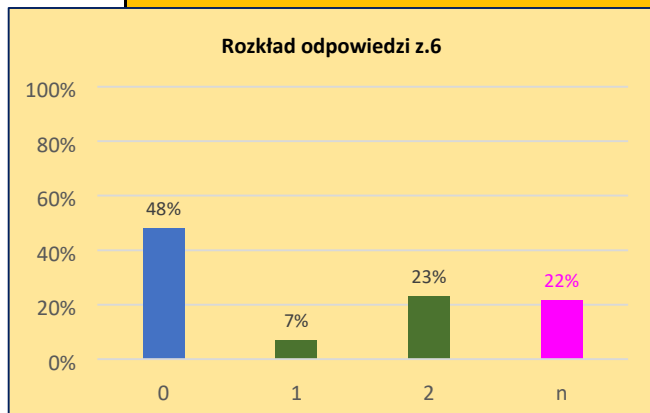


ROZKŁADY ODPOWIEDZI W ZADANIACH ZAMKNIĘTYCH

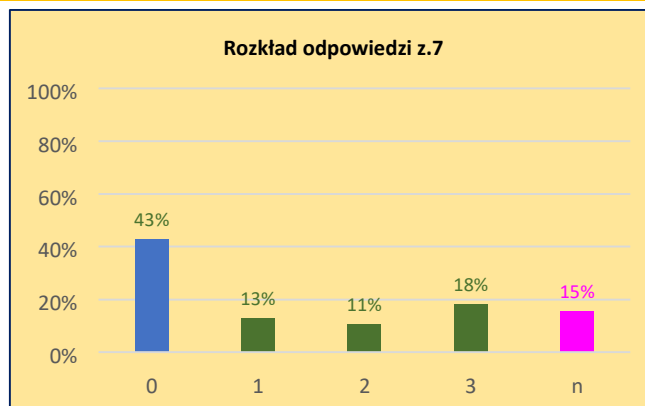




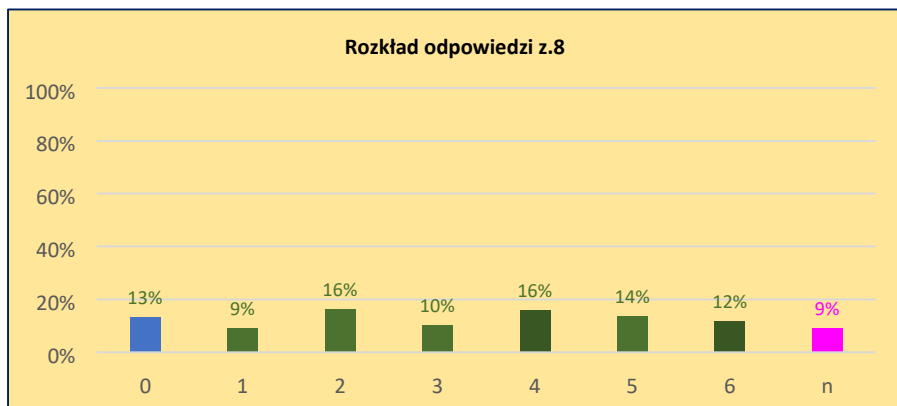
ROZKŁADY WYNIKÓW CZĄSTKOWYCH W ZADANIACH OTWARTYCH



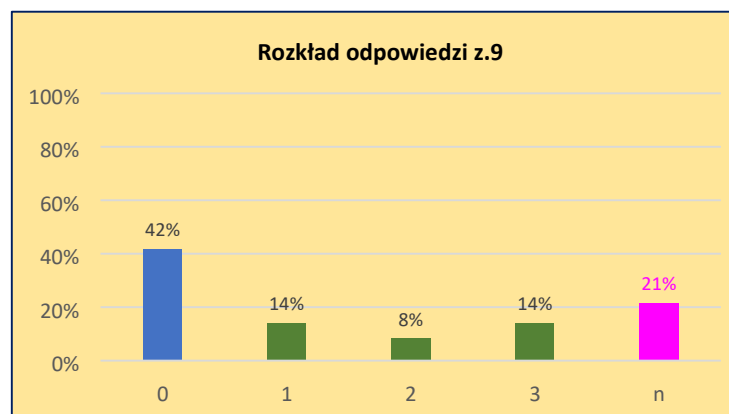
Z.6 - siatka prostopadłościanu



Z. 7 - prędkość, droga, czas



Z.8 - procenty, diagram



Z. 9 - łamigłówka

*Autorka opracowania:
Grażyna Śleszyńska,
MSCDN Wydział w Radomiu*